



MCS MAXI 832 Series

featuring DIN 35 Rail Mounting Adapter

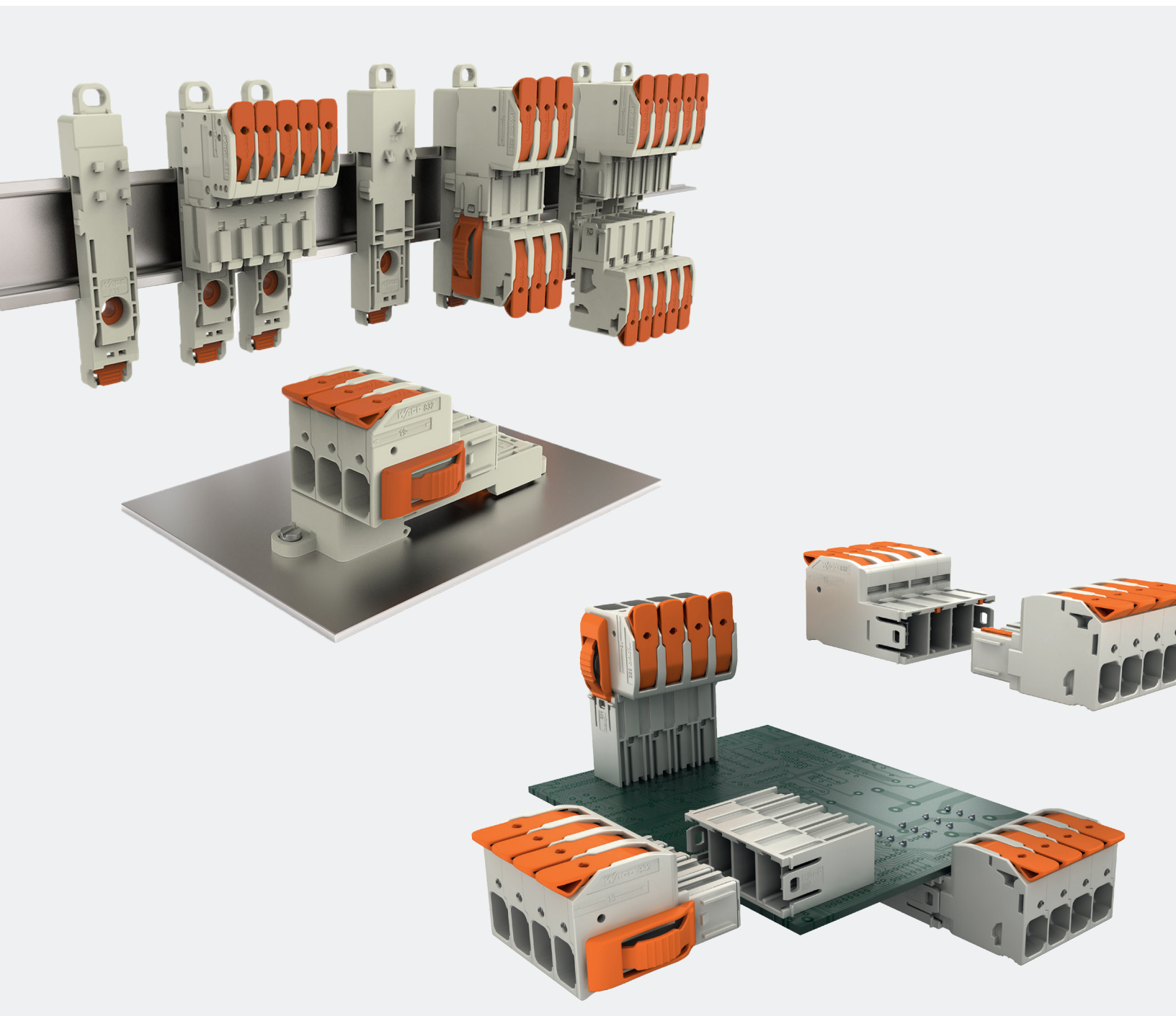
KANSAS CITY, MO
1566 N. Topping Ave.
Kansas City, MO 64120
913.440.4477

SPRINGFIELD, MO
4319 S. National Ave.
Springfield, MO 65810
417.724.2231

ST. LOUIS, MO
2021 Congressional Dr.
St. Louis, MO 63146
314-731-4444

BLOOMINGTON, IL
1701 Empire St.
Bloomington, IL 61704
217.615.4440

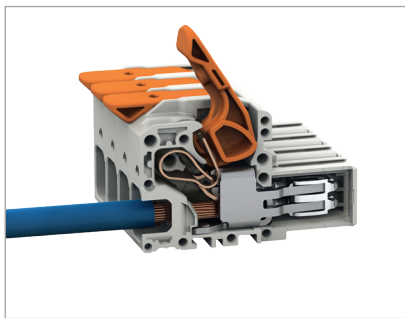
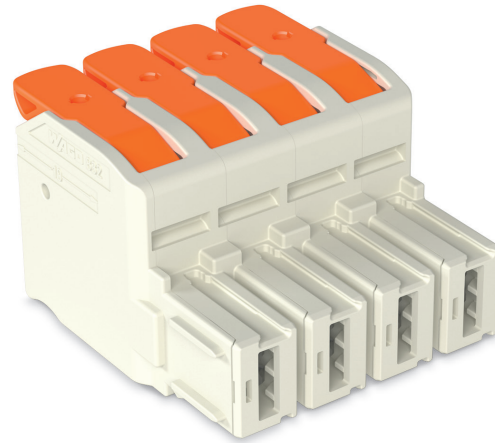
www.hteautomation.com
shop.hteautomation.com



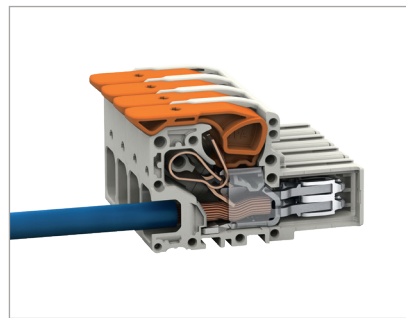
MCS MAXI 16: 832 SERIES

Female Connectors with Levers

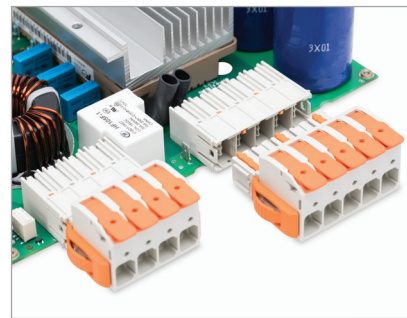
- Female connectors with levers and Push-in CAGE CLAMP®
- Available with and without locking
- Push-in termination of solid, ferruled, and rigid-stranded conductors
- Test ports both parallel and perpendicular to conductor entry
- Secure connection via simple, effortless lever actuation



Lift lever to open spring and insert the conductor.

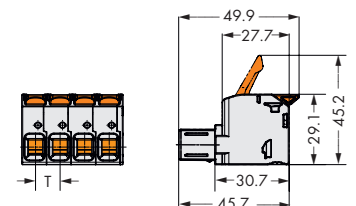


Close lever to terminate the conductor.



Side interlocking latches eliminate accidental disconnect.

832-110x Series		
Pin Spacing	10.16 mm	Conductor Data
		Connection Technology
Ratings Per	UL 1059	Conductor Range
		Strip Length
When mated with:	832-120x Male Connector	832-36xx Male PCB Header
Use Group B	66 A / 600 V	66 A / 300 V
Use Group C	66 A / 600 V	66 A / 300 V
Use Group D	-	5 A / 600 V
Maximum Operating Temp.	130 °C	
Flammability Class per UL94	V0	
Pole No.	Item No.	
	Female connector; light gray with orange levers	Female connector; light gray with orange interlocking latches and orange levers
2	832-1102	832-1102/037-000
3	832-1103	832-1103/037-000
4	832-1104	832-1104/037-000
5	832-1105	832-1105/037-000
6	832-1106	832-1106/037-000



P = Number of poles
 T = Pin spacing
 L = T x P + 1.3

For CAD model and PCB library downloads, go to www.wago.us/832

Female Connector ▶ MCS MAXI 16 ▶ 832 Series

Pin spacing: 10.16 mm / 0.4 inch ▶ Actuation type: Lever ▶ Push-in CAGE CLAMP® ▶ Color: light gray ▶ Mounting type: DIN 35 rail

Mounting type: DIN-35 rail

Mounting type: DIN-35 rail ▶ Locking of plug-in connection: lateral locking lever



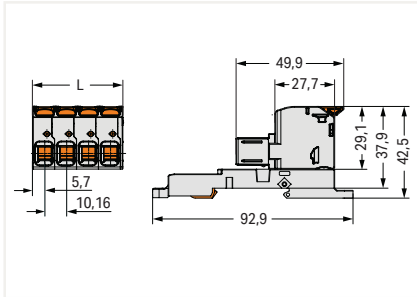
832-1102/306-000



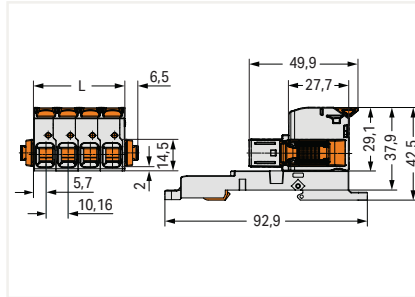
832-1102/037-000/306-000

Pole No.	Item number	PU
2	832-1102/306-000	10
3	832-1103/306-000	5
4	832-1104/306-000	5
5	832-1105/306-000	5
6	832-1106/306-000	5

Pole No.	Item number	PU
2	832-1102/037-000/306-000	
3	832-1103/037-000/306-000	
4	832-1104/037-000/306-000	
5	832-1105/037-000/306-000	
6	832-1106/037-000/306-000	



L = pole no. x pin spacing + 1,3 mm



L = pole no. x pin spacing + 1,3 mm

PU = Packaging Unit; SPU = Subpackaging Unit; Dimensions in mm

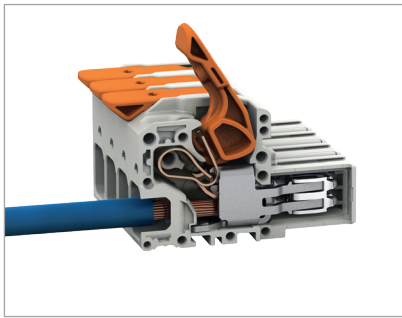
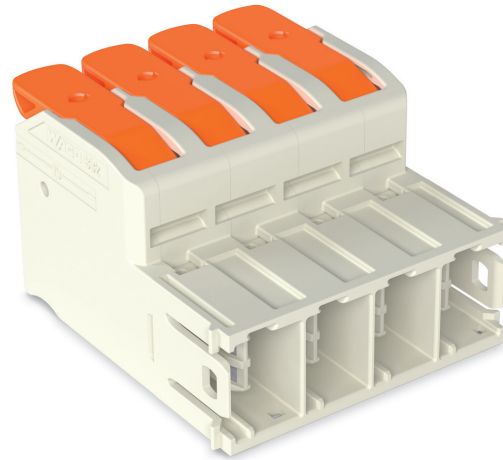
Other versions (or variants) can be requested from WAGO Sales or configured at <https://configurator.wago.com/>.

- Other pole numbers

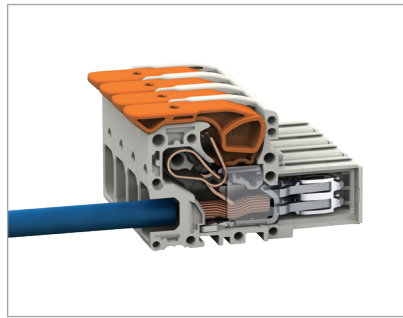
MCS MAXI 16: 832 SERIES

Male Connectors with Levers

- Male connectors with levers and Push-in CAGE CLAMP®
- For wire-to-wire applications
- Push-in termination of solid, ferruled, and rigid-stranded conductors
- Test ports both parallel and perpendicular to conductor entry
- Secure connection via simple, effortless lever actuation



Lift lever to open spring and insert the conductor.

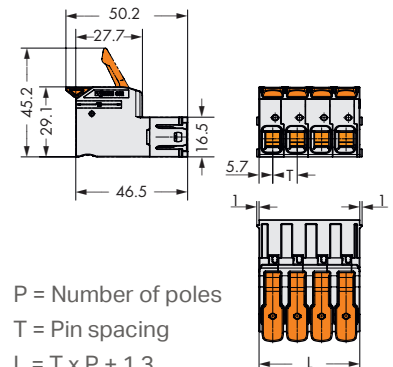


Close lever to terminate the conductor.



Wire-to-wire connections with coding prevents accidental mis-mating.

832-120x Series			
Pin Spacing	10.16 mm	Conductor Data	
Ratings Per	UL 1059	Connection Technology	Push-in CAGE CLAMP® with lever
Use Group B	66 A / 600 V	Conductor Range	18 - 4 AWG
Use Group C	66 A / 600 V	Strip Length	18 - 20 mm
Maximum Operating Temp.	130 °C		
Flammability Class per UL94	V0		
Pole No.	Item No.		
	Male connector; light gray with orange levers		
2	832-1202		
3	832-1203		
4	832-1204		
5	832-1205		
6	832-1206		



For CAD model and PCB library downloads, go to www.wago.us/832

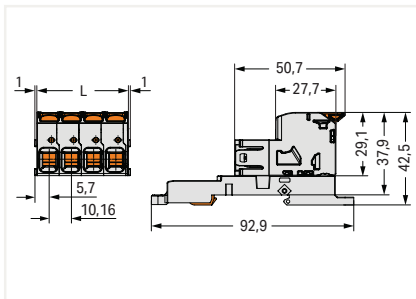
Male Connector ▶ MCS MAXI 16 ▶ 832 Series

Pin spacing: 10.16 mm / 0.4 inch ▶ Actuation type: Lever ▶ Push-in CAGE CLAMP® ▶ Color: light gray ▶ Mounting type: DIN 35 rail



832-1102/306-000

Pole No.	Item number	PU
2	832-1202/306-000	10
3	832-1203/306-000	5
4	832-1204/306-000	5
5	832-1205/306-000	5
6	832-1206/306-000	5



L = pole no. x pin spacing + 1,3 mm

PU = Packaging Unit; SPU = Subpackaging Unit

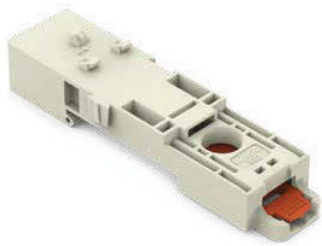
Other versions (or variants) can be requested from WAGO Sales or configured at <https://configurator.wago.com/>.

- Other pole numbers

Mounting Adapters ▶ for Male and Female Connectors with Push-in CAGE CLAMP® Connection

Color: light gray

MCS MAXI 16

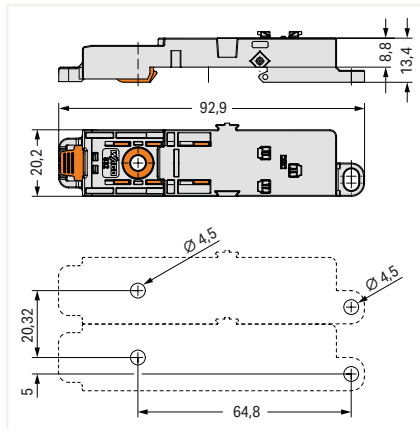


Mounting adapter ▶ for DIN-35 rail ▶ to snap on for MCS MAXI 16

Item number	PU
832-1032	10

Mounting adapter ▶ for DIN-35 rail ▶ to snap on with locking plate for MCS MAXI 16

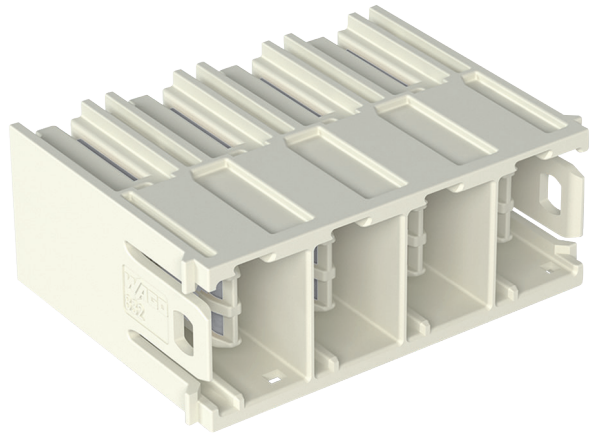
Item number	PU
832-1038	10



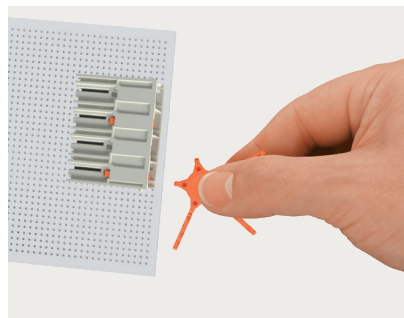
MCS MAXI 16: 832 SERIES

THT Male Headers

- Soldered male headers may be mounted horizontally or vertically via straight or angled solder pins
- Three solder pins per pole provide high electrical and mechanical stability
- 100% protected against mismatching
- Coding options available



MCS MAXI 16 is ideal for enclosure cutouts

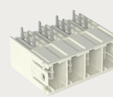
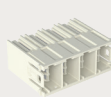


Easy coding thanks to symmetrical coding keys in both male and female connectors



Coding star (Item No. 832-500)

832-36xx Series			
Pin Spacing	10.16 mm	Solder Pin Data	
Ratings Per	UL 1059	Solder Pin Length	4 mm
Use Group B	66 A / 300 V	Solder Pin Dimensions	1.2 x 1.2 mm
Use Group C	66 A / 300 V	Drilled Hole Diameter with Tolerance	1.7 ^{+0.1} mm
Use Group D	5 A / 600 V		
Maximum Operating Temp.	130 °C		
Flammability Class per UL94	V0		

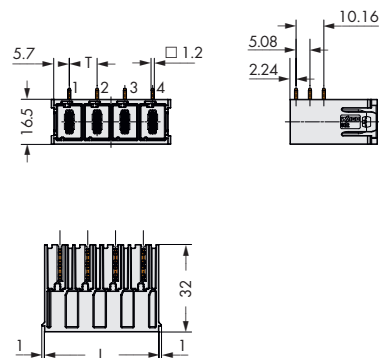
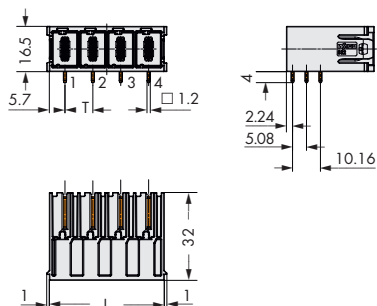
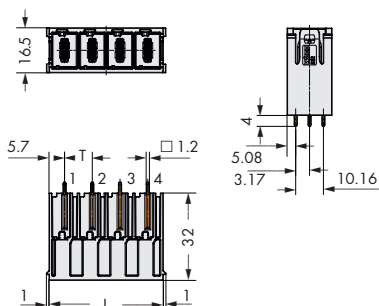
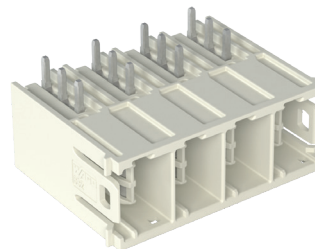
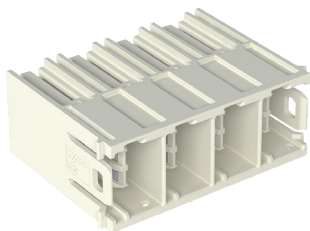


Pole No.	Item No.	Item No.	Item No.
	THT male header; with straight solder pins; light gray	THT male header; with solder pins angled downwards; light gray	THT male header; with solder pins angled upwards; light gray
2	832-3602	832-3622	832-3642
3	832-3603	832-3623	832-3643
4	832-3604	832-3624	832-3644
5	832-3605	832-3625	832-3645
6	832-3606	832-3626	832-3646

For CAD model and PCB library downloads, go to www.wago.us/832

MCS MAXI 16: 832 SERIES

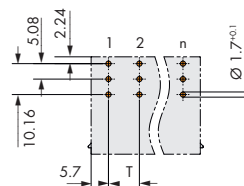
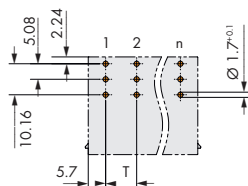
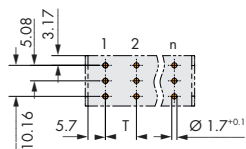
THT Male Headers



Footprint (top view)

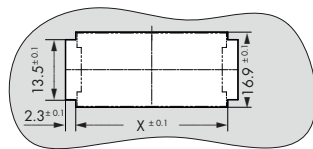
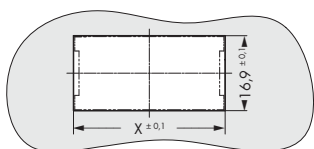
Footprint (top view)

Footprint (top view)



Cutouts for male headers with solder pins

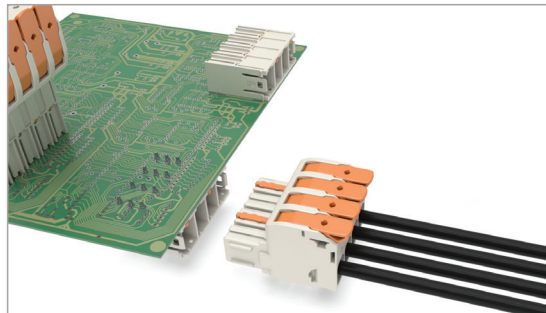
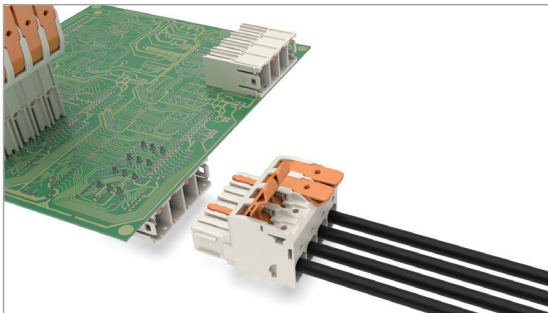
Cutouts for male headers with solder pins (with interlocking latches)



Pole No.	X
2	24.1
3	34.2
4	44.4
5	54.6
6	64.7

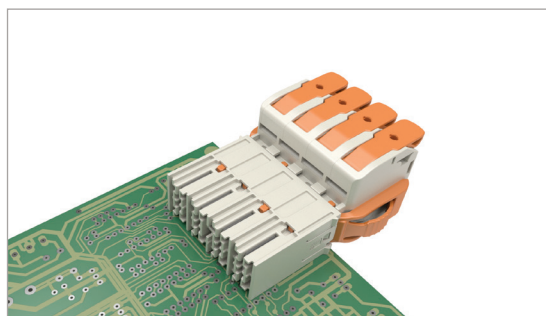
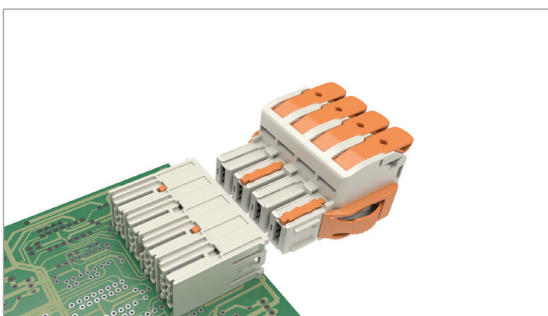
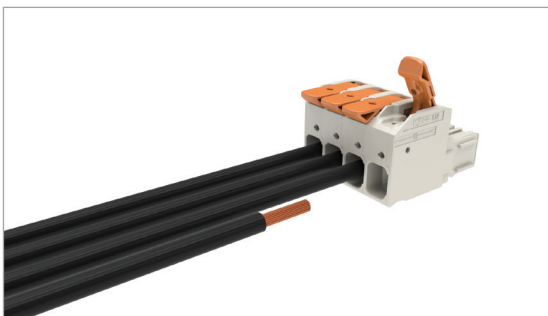


SYSTEM HIGHLIGHTS



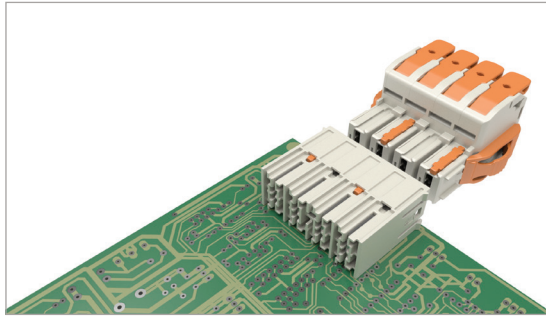
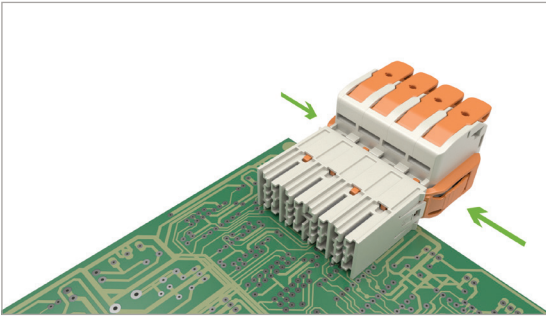
Lever Actuation

Easily wired by hand –
no tools required

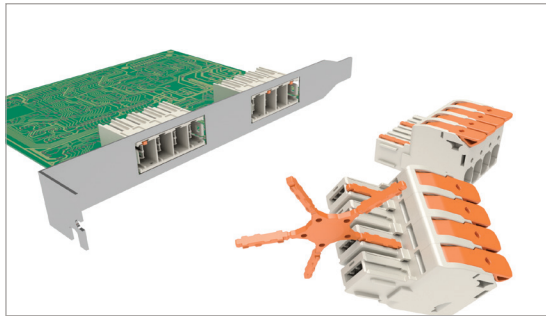


Interlocking Latches

Easy and secure plugging
with automatic locking;
optional side interlocking
latches prevent accidental
disconnection.

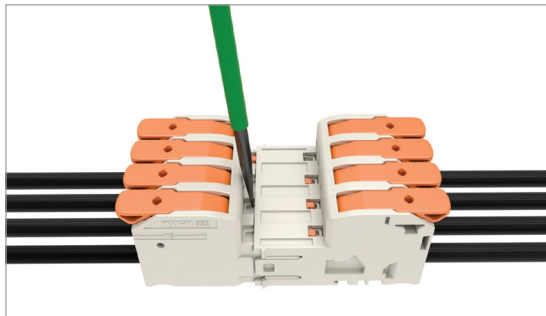
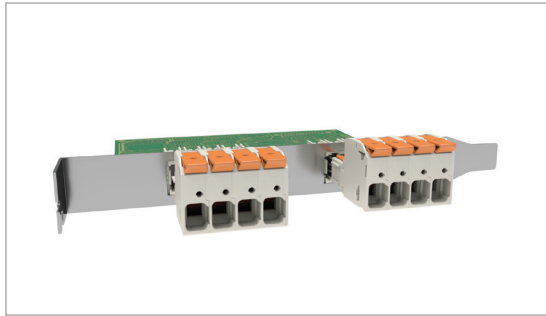
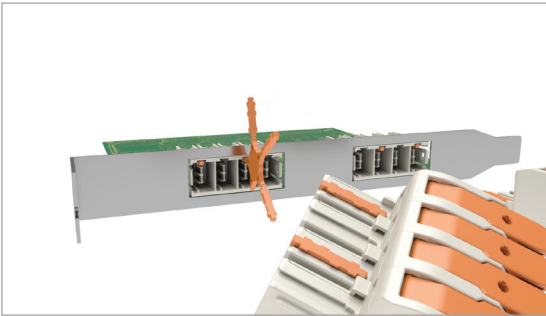


Easy and intuitive disconnection via innovative interlocking latches



Coding

Easy coding thanks to symmetrical coding keys in both male and female connectors



Recoding even when plugged in

